

# SkidWeigh Plus

## ED3 Series



## Enhanced Lift Truck Onboard Weighing Scale

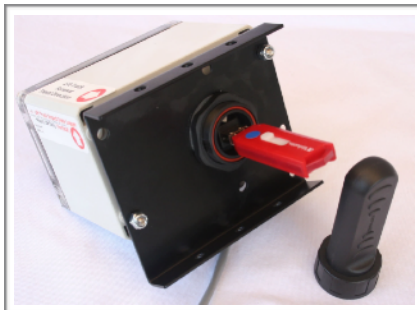
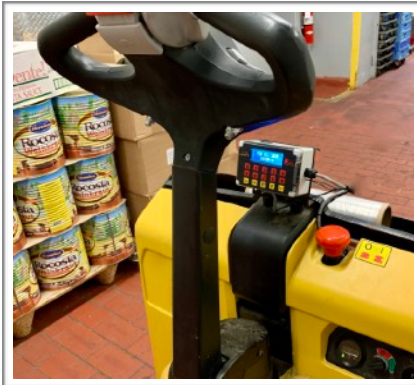
Utilizing the same industry leading performance, technology and design as the ED2, the SkidWeigh ED3 mobile lift truck scale provides material handling applications with the ability to identify and distinguish loads through information.

The ability to input waybill numbers, operator I.D., and vehicle unit numbers along with a 'real time' date stamp provides companies the ability to record, categorize and keep accurate records of the loads weighed.

Accurate to +/- 1% of weighing capacity this on-board scale is also capable of providing information pertaining to performed safety checks, vehicle utilization, and overload warning. Data output capabilities include printer options including Bluetooth and USB data extraction.



Hydraulic Pressure Transducer  
(6 feet cable)



## Specifications

### DIGITAL INDICATOR

- Operating voltage from 12 to 55 VDC
- Operating current 110 mA
- Technology, micro controller
- Real time clock
- Month/Day/ Year LCD display
- Hours/Minutes/Seconds LCD display
- Four analog inputs
- USB port
- Measurement Rate: 16000 samples per session
- English and French languages
- Relay 1, SPDT for external warning
- Relay 2, SPDT for vehicle access

### LCD DISPLAY

- LCD display, 2 Lines x 16 characters
  - Display size 68 x 27 x 11 mm
  - Character size, 6,68 x 2.76 mm
  - High contrast LCD super twist display
  - Low operational temperature version
- ### KEYPAD
- Keypad 16 key with tactile feedback
  - Alphanumeric keys
  - Sealed keypad, watertight
  - Functions overlay
  - Operating temperature: -20 C / + 50 C

### ENCLOSURE & MOUNTING BRACKET

- Enclosure ABS, 120 x 80 x 55 mm with clear front plate
  - NEMA Type 4X
  - Two mounting vibration mounts
- ### Net Weight, 0.6 kg

### PRESSURE TRANSDUCER

- Pressure Transducer (Swiss Made)
- Port connection, male 1/4"-18 NPT
- Built in pressure snubber
- Reverse polarity protection
- Over voltage protection
- Short circuit protection
- Housing material, Stainless steel AISI 303
- Weight 95 grams
- Installation, unrestricted
- CE conformity, EN 61326-2-3

## Standard Features

### WEIGHING ACCURACY

+/-0.1 to +/-1% of vehicle maximum lifting capacity

### LOAD MEASUREMENT RANGE

Weighing range up to 99999 lb or kg

### OPERATING PROCEDURE

Lift-N-Weigh load weighing procedure

### GRADUATION

1, 5, 10, 50 and 100 (default 5)

### SYSTEM CALIBRATION

Automatic load weight calibration , password protected

### WARRANTY

Two year limited warranty

### ORDER NUMBER

### ED3

Standard weighing system with TARE function, accumulative load weight total and USB recording

### HARDWARE OPTIONS

Bluetooth module for printer / scanner  
RF wireless module  
RFID card reader

### OPTIONAL SOFTWARE PACKAGES

OSHA safety check  
RFID vehicle operator access control  
Keypad vehicle operator access control  
Utilization, operational downtime  
Freight dimensioning  
Recycling application  
Impact management  
Waybill ID# operator keypad input  
Waybill ID# operator input utilizing barcode scanner  
Automatic lifted load weight recording  
Parts count measurement

### 1. Electric Pallet Truck Application ORDER NUMBER

### ED3-EP

(Lift Accurate Technology)

### 2. Lift Truck Application for vehicles with hydraulic accumulator ORDER NUMBER

### ED3-HA

### 3. Lift Truck Application

### Note:

With number of software and hardware options for ED3 SkidWeigh Plus series, please contact manufacturer / local lift truck dealer for the system configuration that is applicable for your material handling operation.

Integrated Visual Data Technology Inc.  
3439 Whilabout Terrace, Oakville,  
Ontario, L6L 0A7, Canada  
Phone: 905-469-0985  
[sales@skidweigh.com](mailto:sales@skidweigh.com)  
[www.skidweigh.com](http://www.skidweigh.com)