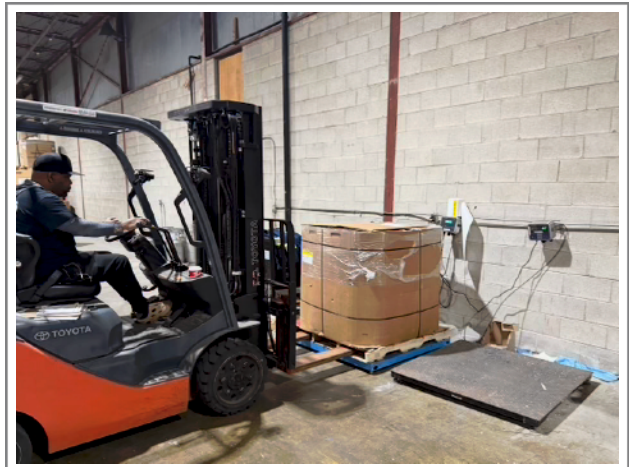




Lift Truck Onboard Check Weighing Scale With Accumulative Load Weight Total And Visual Overload Alert



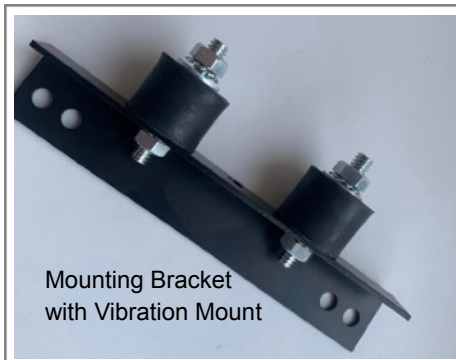
Onboard Check Weighing



Eliminate Trips to Floor Scale



Pressure Transducer with Cable



Mounting Bracket
with Vibration Mount

Specifications

DIGITAL INDICATOR

- Operating voltage from 12 to 55 VDC
- Operating current 60 mA
- Technology, micro controller
- Measurement Rate: 16000 samples per session
- Relay, SPDT for external overload warning
- Readout type, LED display, 0.8 in, 6 digit, 7 segment. Bright display intensity

ENCLOSURE

Polycarbonate, 148 x 66 x 40 mm with clear front plate, mounting holes, UL94-HB

- NEMA Type 4X
- Net Weight, 0.3 kg
- Operating temperature: -40 C / + 50 C

PRESSURE TRANSDUCER

- Pressure Transducer (Swiss Made)
Custom made for SkidWeigh products
- Port connection, male 1/4"-18 NPT
- Built in pressure snubber
- Reverse polarity protection
- Over voltage protection
- Short circuit protection
- Housing material, Stainless steel AISI 303
- Weight 95 grams
- Installation, unrestricted

Features

WEIGHING ACCURACY

+/-0.1 to +/-1% of vehicle maximum lifting capacity

LOAD MEASUREMENT RANGE

Weighing range up to 99999 lb or kg

OPERATING PROCEDURE

Lift-N-Weigh load weighing procedure by lifting loaded forks just above the ground.

GRADUATION

1, 5, 10, 50 and 100 (default 5)

SYSTEM CALIBRATION

Front panel with two push buttons automatic load weight calibration by lifting empty and loaded forks with known load weight just above the ground.

Note: Input calibration known load weight value in pounds or kilograms.

ACCUMULATIVE LOAD WEIGHT TOTAL

Black button, press to add load weight
Red button, press to reset total

OVERLOAD ALERT

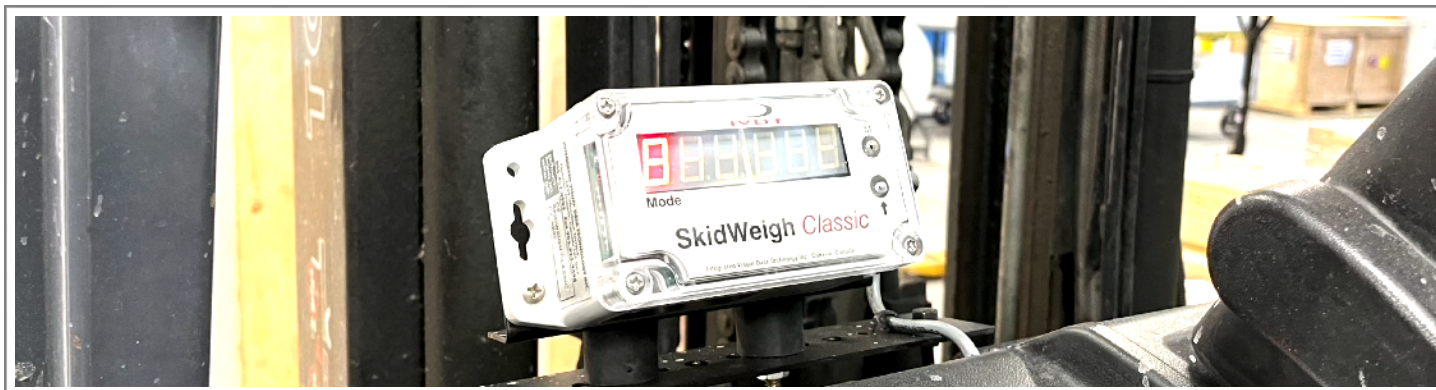
When overload threshold detected system visual alert will be shown on LED display and stay on until overloaded item is lowered to the ground.

WARRANTY

Two year limited warranty

ORDER NUMBER

- **SC2** Standard weighing system with accumulative load weight total and overload alert shown on LED display



The SC2 system has been developed for global markets as the universal application for any type of lift truck, regardless of vehicle make, model, lift capacity or operating voltage from 12 to 48 VDC.