

InfoHubX Communication Gateway — Quick Start Guide

Your InfoHubX Communication Gateway is supplied fully pre-configured and ready for deployment. The system consists of the following components:

1. DIGI XBee 900HP Modem (small black module)
2. HP Laptop (preloaded with the InfoHubX software)

1. Hardware Setup

1. Connect the DIGI 900HP modem to its power supply.
2. Using the provided USB-A to USB-B (grey) cable, connect the modem to the laptop.
3. Power on both devices.

The modem and laptop are pre-programmed to communicate automatically, so no pairing or configuration is required.

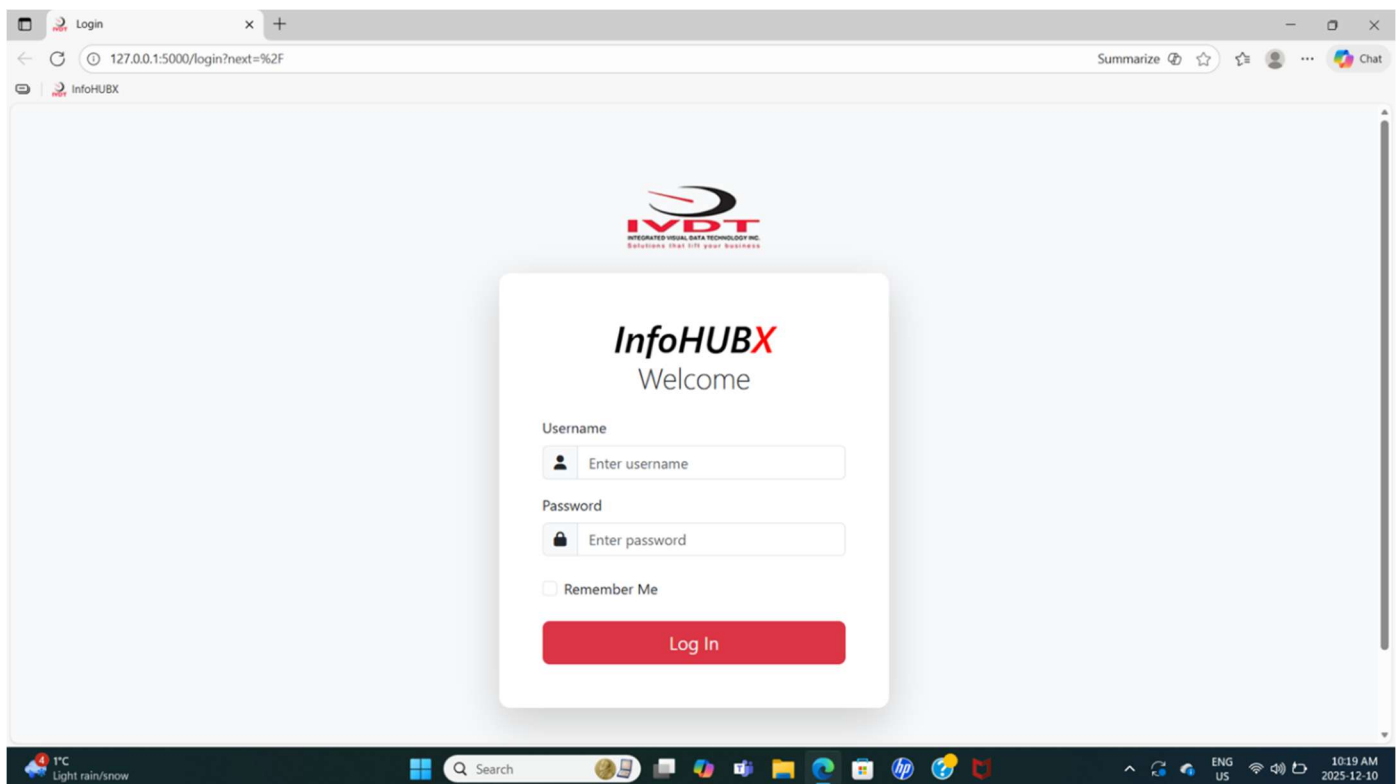
2. Local System Test (Before Network Setup)

You can verify that the system is operating correctly even before assigning a network IP address:

1. On the laptop, open any web browser.
2. Enter the following address: 127.0.0.1:5000

This address confirms that:

- The InfoHubX server is up and running on the laptop.
- The web interface is functioning correctly and can be accessed locally.

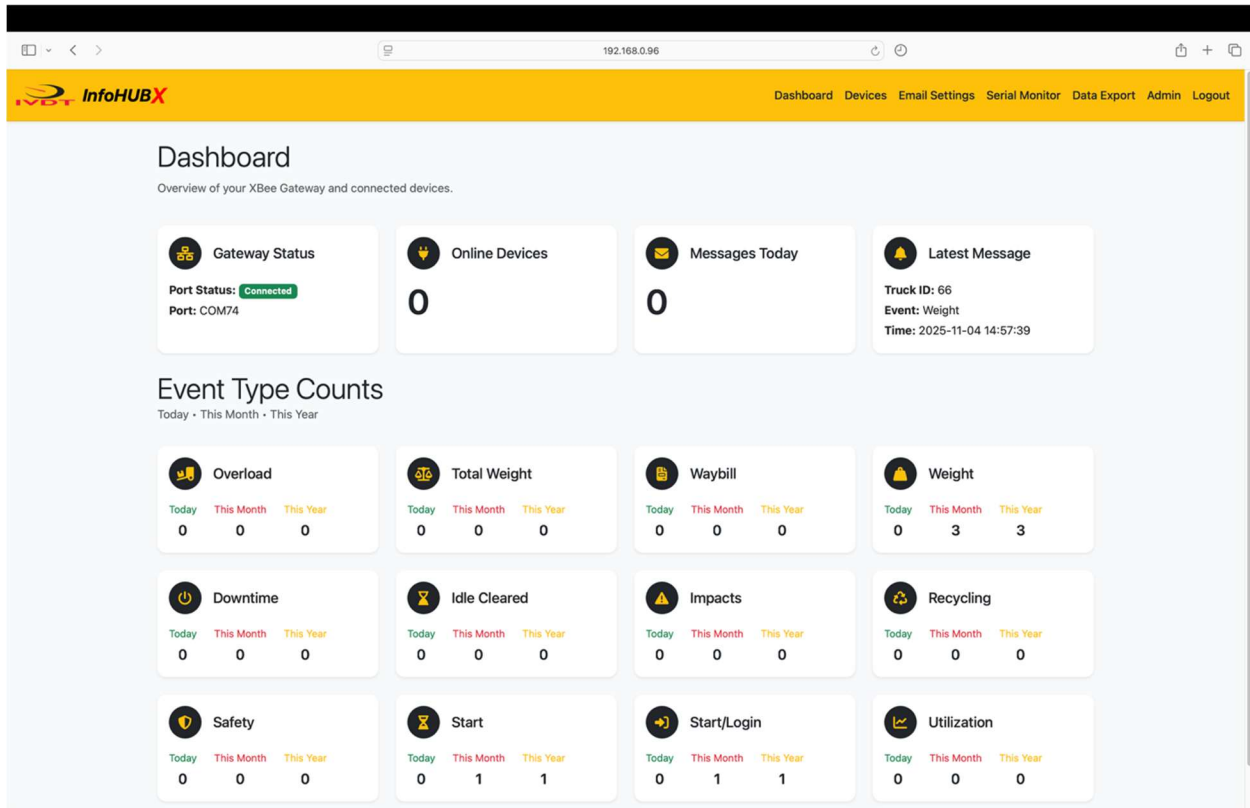


Important:

- 127.0.0.1:5000 is a local-only address.
- It cannot be accessed by other devices on your network.
- It does not support email notifications.
- The page will display only on the host laptop.

- **Note:**

The local test address alone does not verify communication between the modem and the laptop. To confirm USB modem communication and live data flow, log in to the dashboard, the Gateway Status card will indicate whether the modem is connected and receiving data.



3. Login Credentials

1. The system arrives with default administrative access:
 - Username: admin
 - Password: admin123
2. After logging in, you can change this password in the Admin Settings for improved security.

4. Network Setup (Normal Operation Mode)

To allow any workstation on your LAN to access the InfoHubX dashboard:

1. Connect the laptop to the desired network via Ethernet or Wi-Fi.
 2. Assign the laptop a valid network IP address. (either DHCP or Static, depending on your IT preferences).
 3. Once the laptop has an IP, open the browser and enter: <assigned_IP_address>:5000
 - For Example: If the laptop receives IP 198.1.12.68, enter: 198.1.12.68:5000
 4. The InfoHubX dashboard will now be accessible on any device that has web browser as long as they are on the same network.
-

5. System Availability

The InfoHubX host computer is configured to:

- Remain powered on
- Disable sleep and hibernation
- Maintain continuous data collection

This ensures the dashboard is always available and up-to-date on any workstation.

6. Email Notification Setup

To configure email alerts:

1. Click Email Settings in the top-right corner of the dashboard.
2. Enter and Save your SMTP details, including SMTP Server, Sender Email, Port Number, and Password / App Password (if required).
3. Click Send Test Email button to test your entry setting and a test email will be sent to the sender email address.
4. Assign Email Recipients
 1. Enter the desired email address in the Recipient Email field
 2. Click the Add button to add the email to the email list.
 3. You can select the email trigger events and trucks by clicking Select Events and Select Trucks buttons beside the email.
 4. You can delete the email notification by clicking the delete/trash button.

Important:

- Ensure your organization's Exchange Online Protection and Core Email Protection policies allow outbound SMTP from the InfoHubX host PC.
- The email server must be permitted to relay messages from this device; otherwise, notifications may be blocked.

The screenshot shows the 'Email Notification Settings' page in the InfoHubX dashboard. The page is divided into two main sections: 'SMTP Configuration' and 'Email Recipients'.
In the 'SMTP Configuration' section, there are input fields for 'SMTP Server', 'SMTP Port' (set to 587), 'Sender Email (Username)' (e.g., sender@example.com), and 'Sender Password'. Below these is a checkbox for 'Enable Email Notifications' and a red 'Save SMTP Settings' button.
The 'Email Recipients' section shows a table with one recipient: 'liza@ivdtsolutions.com'. For this recipient, there are buttons for '0 Events', 'Select Events', 'All Trucks', and 'Select Trucks', along with a delete button.