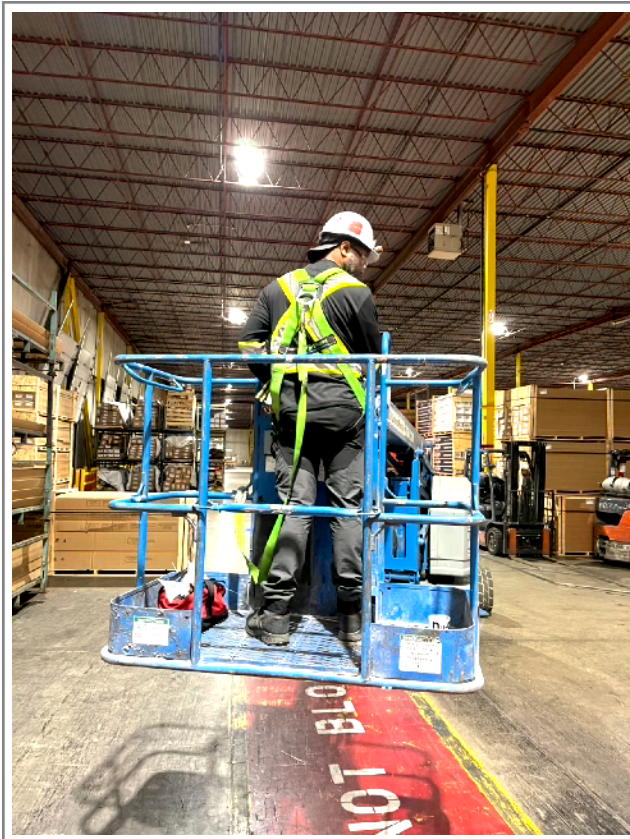


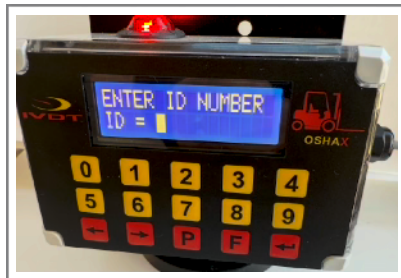
Material Handling Vehicles & Equipment Automatic Operator Daily Safety Check Compliances Recorder



Installation, Setup & Operator Usage Manual

System Application and General Installation Guide

This **OSHAX** system, automatic daily Pre-shift safety check recorder has only two wires electrical connection to vehicle power. Simple installation to any type of material handling vehicle or equipment in any operation allows management to assure 100% daily recorded OSHA compliances. The OSHAX has been developed specifically for so called “Big Boxes” operational facilities such as Home Depot, Walmart, Target, KEA, Rona, Costco, etc. having a fleet of different mobile and stationary equipment. Following instructions you will be able get OSHAX system install and operating quickly on forklifts, order pickers, reach trucks, electric pallet trucks, scissor lifts, industrial man lifts, etc.. In the event that you require additional assistance, visit www.skidweigh.com



Safety

Always disconnect the vehicle battery while installing any of the OSHAX systems or any other electronic product. Route the cable where they will be protected. Use commonly accepted install practices for after market industrial vehicle electronic devices. The installation of the systems should only be performed by an acknowledged lift truck dealer technician or end user electro and hydraulic technical installer.

Here are two acceptable methods of making a wire connections:

- * Soldering your connections (recommended)
- * Crimp connectors (with the use of the proper crimping tool)

Regardless of the method you choose, ensure that the connection is mechanically sound and properly insulated. Use high quality electrical tape and shrink tubing where necessary.

This product is connected directly to the vehicle's ignition switch, (Power On switch) 12 to 55 V DC. There is no on-off switch on the unit.

Electro-Magnetic Compatibility

CE conformity to EC directive 89/336 (EMC) by application of harmonized standards: Interference stability EN 61000-6-2 and EN 61326-1 interference emit EN 61000-6-3, EN 61326-1 for the pressure transducer.

OSHAX Series

Our policy is one of continuous improvement and the information in this document is subject to change without notice. Check that software version displayed on LCD If applicable for your application.

Overview of components

The standard **OSHAX** system consist of digital indicator with USB port, wiring harness and mounting bracket.

Audio / Visual Warnings

The standard OSHAX comes with Audio / Visual alert warning to prompt operator to input valid ID# and initiate OSHA or Pre-shift safety check session, daily every 8 Hours (Default) or every 12 or 24 hours.

Electrical Connection (Two wires only)

Connect OSHAX to ignition switch or power ON/OFF switch.

(RED wire to + and BLACK wire to battery negative) System input voltage range is 12 to 48 VDC)

Selecting the mounting location for OSHAX

Mount the indicator in front of the operator. Digital indicator should be mounted on solid metal surface (dashboard, upper railing, side railing, etc.). Use metal mounting bracket to fasten the system to the vehicle body.



Hardware

Digital indicator with USB port

Keypad operator input

Mounting brackets

External Audio / Visual alert

(Mounted on top of the indicator housing)

Standard Recording

Real Time clock

Vehicle ID#

Operator ID#

Log In time

Safety check (*Default time every 8 hours*)

Safety check start time

Five default safety questions

Total time taken to complete safety session

Recorded session is in CSV format

Default Daily OSHAX Safety Check Session (*Factory set to every 8 hours*)

All OSHAXI are supplied with default daily safety check of 8 hours. (*Start time is 7:00 AM*)

Note: The OSHAX system can be set up for default daily safety check every 12 or 24 hours.

Default Operator ID# (Factory set)

All OSHAX are with one default operator ID# number **111**. With power connected to the system the LCD will prompt to input valid operator ID#. The installation technician can input default ID# **111** for ID# and press “**Enter key**” to initiate system set up.

Setup & Management Menu

With LCD display showing **Date / Time** you are ready to use management menu. Press **F** key and press number **9**.

Input password **521**. Use **< >** keys to scroll for functions that apply for your system configuration.

Follow the LCD instruction, use “**EnterKey**” to confirm set up and press **F** key to exit management set up menu.

Set Vehicle ID#

Maximum input number for vehicle ID# are 3 digits (1 to 999) and press **“Enter Key”** to confirm.

Date / Time Set Up



In the event that **Date / Time** needs to be changed in the management menu use **< >** arrow scroll key to SET CLOCK shown on LCD display.

Change **AUTO** to **MANUAL**. **Note:** *The AUTO is used with RF Base Station.*

- Follow the LCD instruction and press **“Enter key”** to confirm setting.

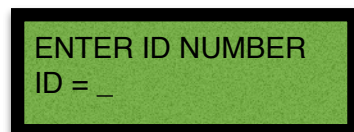
The cursor will automatically move to the next item to be changed (Month, Day, Year, Hours, Minutes, Seconds)

- Use left and right arrow to change the value

- Press **“Enter key”** to confirm setting

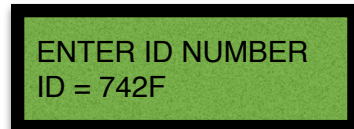
How to Program Operator ID#'s for Vehicle Access Control

OSHAX. system allow up to 250 different users in any combination of a 3 digit ID# code (1 to 999)

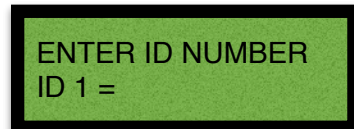


1. Turn power on to the system.

The LCD display will show 'IVDT, Software version and Serial number', after a brief period of time the prompt will default to ENTER ID NUMBER.

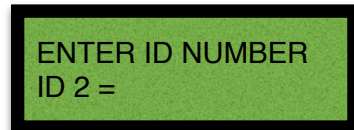


2. Enter **742F** and then press the **“Enter key”** to start the procedure of the input mode to create valid operator ID#'s.



3. LCD display will prompt to input first authorized operator ID number

4. ID 1 = _



5. Input into the system any number, maximum 3 digits and press **“Enter key”**

6. The LCD will automatically advance to the next operator ID number to be input into the system

7. ID 2 = _

8. Input into the system second authorized operator ID number and press **“Enter key”**.

Note: You can input up to 250 valid operators ID#s.

- When entering in the system your last valid operator ID#, press **“Enter Key”** and press **“F” key** to complete programming

- Every time you enter **742F** into the system to delete, update, change, etc. the LCD display will show the first valid ID# previously entered. By pressing **“Enter key”** you can scroll and see all valid ID#'s in the system.

Operational Guide

Turn power on (Ignition switch or on / off power switch)

- **External Audio / Visual alert will be activated** and stay on until valid operator ID# is inputted in the system.
- Input valid ID# and press “**Enter**” key.
- Audio / Visual alert will stay on until valid operator ID# is inputted into the system and safety check session is done.

ENTER ID NUMBER
ID = __

SAFETY CHECK
LEAKS / DAMAGE?F_

SAFETY CHECK
FLUID LEVELS?F_

SAFETY CHECK
LIFT DEVICES?F_

SAFETY CHECK
TIRE DAMAGE?F

SAFETY CHECK
SAFETY EQUIP?F_

JAN 28, 2023
7:35:53_



AUDIO / VISUAL alert will stay active until valid operator ID# and safety check session is completed.
(LCD display will show current Time/ Date)



F Represents **FAIL**

P Represents **PASS**

Use <> arrow key to toggle default **F** to **P** if valid and press “**Enter Key**”

